



6th September 2021

Dear Parent/Carer,

I hope this first newsletter of the academic year finds you and your families safe and well after the summer break. It has been fantastic to see the children return to school looking extremely smart in their new uniforms and for us to be able to return to some normality during the school day. Pupils no longer need to remain within their year group bubbles which has allowed us to return to one break time and one lunch time rather than the staggered approach we had before the summer. Face masks are no longer required to be worn in classrooms unless pupils choose to do so. We do still have some vulnerable members of staff who will continue to socially distance in lessons, wear face masks and teach from the front in their classrooms.

I would like to take this opportunity to warmly welcome our new Year 7 pupils and parents. It was wonderful to meet so many new and current families and welcome them to the Broughton 'family' at our new Year 7 Parents' Meeting last Thursday where I was able to talk to them about life at Broughton High School and what they can expect over the next five years. I am looking forward to getting to know them all over the next few weeks and months. A special mention our Head Boy and Head Girl, Archie Macleod and Megan Sloan, who spoke extremely confidently at their first public appearance.

I would like to welcome our new members of staff: Miss Harrison (English Teacher - maternity cover), Ms Jameel (Exclusion Room Manager), Miss Kouser (Attendance Improvement Officer), Ms Law (Counsellor), Mr Nayler (Geography/PE/Science teacher), Miss O'Rourke (English Teacher - maternity cover), Mr Pati (Learning Support Assistant), Ms Roskell (Receptionist) and Mrs Willacy (Laboratory Technician). I am sure you will join me in wishing them the very best of luck as they start their time at Broughton High School.

Our former Year 11 pupils received their GCSE examination grades on 12th August and I have to say the performance of this year group under very difficult circumstances has been exceptional. Pass rates in all subjects were extremely high and pupils again made exceptional progress from when they joined us in Year 7. The number of pupils achieving and exceeding their target grades was extremely impressive and I want to congratulate them all again on their hard work, effort and commitment to their studies during their time at Broughton High School. To celebrate and to finish Year 11 in style we managed to re-arrange the 'Leavers Prom' which was held at Barton Manor last Wednesday. It was wonderful to see over 130 of our former pupils arriving in all forms of transport from 'Ferrari's' and 'Vintage Land Rovers' to 'Dumper Trucks' and Stretch Limousines'. The pupils had a wonderful evening and unlike last year managed to finish their journey at Broughton in style.

Our annual Open Evening returns on Thursday 16th September starting at 6pm. School will close at 1pm in preparation for the evening and a significant number of pupils will be returning at 5.30pm to help out in departments or to lead tours of the school. Pupils will need to collect a letter of consent to allow them to help out on the evening which will need to be signed and returned as soon as possible to the relevant teacher.

There has been a significant amount of building work completed during the summer holidays that has enhanced the school building and facilities for our children. As with all new developments our aim is always to ensure our pupils have the best possible facilities. Our pupil toilet facilities were in desperate need of modernising and two new toilet areas have been installed, one in each of the school buildings. Each area has three or four individual

Headteacher: Mr David Botes

cubicles with individual floor to ceiling doors for hygiene and privacy and are in line with specifications for new and modern toilets that are installed in schools. The library has had a complete refurbishment and makeover and we have made some improvements to our fences and gates to ensure site security is of the highest standard.

On our return to school we have launched our new Behaviour for Learning policy which Mr Bailey explained to all pupils on Friday last week in assemblies. You will be able to track your son's or daughter's rewards, attendance and any behaviour issues using the new school parental information system 'School Synergy'. Already over 400 families have signed up using the letter that was sent out last week to register their account. If you have not yet registered please take a few minutes to enter your details to enable you to receive daily updates and school information. This system replaces 'ClassCharts'. If you have any problems registering your account please contact the school and we will be happy to assist.

As you are aware, we have high expectations in so many areas. We expect all pupils to wear the correct uniform smartly at all times. Ties should be knotted correctly and go to the waistband of trousers or skirts. Shirts should be tucked in at all times. Skirts should be worn correctly and at the knee. Shoes must be plain black (no trainers). Outdoor coats should be plain black or blue and must never be worn around school. They are to be stored in a bag or a locker. We do not allow coats or hooded tops with motifs or emblems, or jewellery (apart from plain studded earrings). All uniform can be purchased from Monkhouse Schoolwear (Preston) or from The Uniform and Leisurewear Company (Garstang).

As earlier mentioned, currently, pupils are no longer required to wear masks in school. However, we will continue to use hand sanitiser on entry to each classroom, wipe desks and ensure that each room is well ventilated. Schools are no longer required to carry out contact tracing where a positive case is identified. Consenting pupils will have a lateral flow tested twice on return to school and will be issued with home testing kits to complete tests on Wednesday and Sunday evenings. Please inform us immediately of a positive result. We will continue to provide as much work as possible for those who are isolating although this won't always be access to an online lesson.

Please can I remind all parents about the importance of attendance at school. Our school attendance figures are always impressive but there is a direct link between intermittent attendance and exam performance. The school day starts at 8.40am. Any pupils arriving after this time will receive a break time detention. I do not authorise absence for holidays in school time. If a pupil is absent for holidays, this will result in an unauthorised absence on their school record. If you are in any doubt about holiday dates, please refer to the school website before you book, or simply ring school. The holiday pattern does change from year to year, so it is always worth checking. Thank you for your support with this matter. You may notice an additional holiday that has been added to the school calendar on the 12th November 2021. This day is in lieu of the Queen's Jubilee which falls during May half term 2022.

Unfortunately, Woodplumpton Road continues to be closed until the 12th September. Thank you for your patience with this disruption at the start of the year.

We will be sending an acceptable use agreement out to parents this week which outlines our expectations for all our pupils whilst using our school network and computers. Please can you carefully read this document and click to agree the term of this policy for your child. The link will be sent through Firefly for you to access.

Please can I remind all pupils that if they are cycling to and from school they must wear a helmet for the duration of the journey. It is so encouraging to see the number of pupils who routinely cycle to school and we have had to add an extra bike shelter to accommodate the numbers, but they must do it safely. Any pupil who does not wear a helmet will not be allowed to come to school on their bike. It is also important to note that we expect behaviour on the way to and from school to be always of the highest standard. If pupil behaviour ever drops below our high expectations we will always investigate and sanction appropriately.

If you ever have any questions or concerns, please do not hesitate to make contact. My email is botesd@broughtonhigh.co.uk.

Yours sincerely,



Mr David Botes
Headteacher

Dear Parents,

After all the difficulties with GCSE examinations, we were thrilled and proud of the Year 11 results.

	2017	2018	2019	2020	2021
% English/Maths 4+	84%	87%	87%	90%	89%
% English/Maths 5+	68%	68%	67%	70%	69%
% English/Maths 7+	24%	29%	28%	30%	31%
Attainment 8 *	5.5	5.7	5.8	6.0	6.0

(* a measure of a pupil's average grade across eight subjects).

These overall grades are **well above national averages** and we are so proud of our former Year 11 pupils.

- **92% of all pupils** achieved **at least a grade 4** ('standard' pass) **in English**
- **90% of all pupils** achieved **at least a grade 4 in Maths**
- **93% of all pupils** achieved **at least a grade 4 in Science**
- Overall, **89% of pupils** achieved **grade 4 in both English and Maths.**
- **40% of all pupils** achieved **at least a grade 7 in English**
- **40% of all pupils** achieved **at least a grade 7 in Maths**
- **49% of all pupils** achieved **at least a grade 7 in Science**




Following almost two years of disruptions, we are incredibly proud of the way the Year 11 of 2020-21 applied themselves. They had an excellent attitude to school, the right work ethic, and stayed positive despite the uncertainties especially in the final few months.

These results are GCSEs that each and every pupil can be proud of. Once again thank you for your continued support, it should be a comfort to all parents that your child can achieve such superb results when pupils, staff and parents work together.

Mr Brady

Learn it CHALLENGE

Every Wednesday, pupils in **Years 7, 8 and 9** will be given  different, relevant facts in tutor time. Their challenge will be to learn and remember all ten facts for the following week, when they will be tested on them by their form tutor. The first set of challenge questions will be set this week (Wednesday 8th September) and the test will be the week after. The questions/facts will be on Firefly for the pupils to learn and details will be included in the next newsletter.

Why are we doing this?

- ✓ essential practice for exams
- ✓ learning relevant, factual information
- ✓ rote learning is good for pupils
- ✓ acquiring some general knowledge

PTFA Annual General Meeting

*** ALL WELCOME TO ATTEND ***

Wednesday 22nd September 2021 at 6.00pm

Oak Meeting Room, Visitor Reception

A copy of the agenda is attached to this newsletter.

YEAR 11 PROM

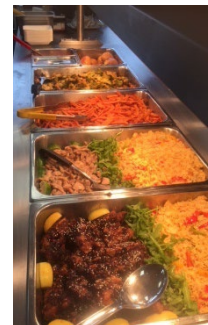


TERM DATES

The holiday patterns for 2021-22 and 2022-23 are attached to this newsletter.

Catering

We continue to self-manage our own kitchens. Meals are competitively priced, locally sourced and we can be responsive to the food requests of pupils whilst still complying with national healthy food standard requirements. We do not allow pupils to bring in energy drinks, large bags of crisps, packets of biscuits or extra large bars of chocolate. If we see these items they will be confiscated and you can come to collect them.



A 'meal deal' (hot meal, dessert and a drink) **costs £2.60** which represents excellent value for money.

We would like to remind parents to keep their child's ParentPay account topped up to ensure there is sufficient balance available to pay for food at break/lunch.



If you have any enquiries about catering in school, or about Parent Pay, please contact **Mrs Ogden** (ogdenj@broughtonhigh.co.uk).

New Year 7 Pupils

On Thursday 2nd September, 185 Year 7 pupils arrived at Broughton to begin their new life at secondary school. Without exception, every pupil looked impeccable, wearing their uniform with pride.

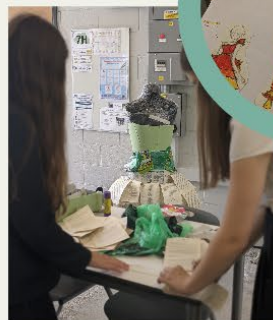


Welcome to Broughton High School Year 7; you have made a fantastic first impression.

Flash Trash

Before the summer holidays, Year 9 had a very creative flying start to GCSE Textiles.

Their challenge was to design an outfit using only waste and materials that were due to be recycled. The pupils worked individually and as teams to produce these super outfits and they have all been entered into the South Essex University 'Rubbish Costume Construction Competition!' Keep your fingers crossed!



Pupils started off by researching a range of different designers to help inspire them, they individually designed 4 outfits and then worked together in teams to develop the final outfit which they drew full size before turning it into a life size creation.

- Mrs Tillotson



Summer School Year 6

Almost 100 new year 7 pupils took part in this year's Summer School during the summer holidays. Pupils were involved in classroom-based activities learning English, Maths, Science, Art, Humanities, Languages, Technology and PE. We also had two trips out of school to the Liverpool War Museum and Rock and River in Mawdesley for and outdoor pursuits day.



The week allowed pupils to become familiar with our school and staff, to help them with their transition. It also provided an exciting and rewarding start to the next part of their journey with us. All the pupils showed great enthusiasm and willingness to learn new skills. Well done to all those involved.

Mrs Bamber

Summer School Year 7

Over the summer months, 24 pupils in Year 7 attended the Broughton Summer School. Across the three days, the pupils were involved in a number of fun-based activities, including stand-up paddleboarding, climbing, abseiling and archery at the Outdoor Adventure Centre. This was followed by a jam-packed day in school involving some English, Maths, Science and PE lessons, all of which were delivered in a fun and exciting way.



The pupils were fantastic throughout, embracing every opportunity they were faced with, many of which were out of their comfort zone. I have no doubt that they all have grown in confidence as a result. Well done to all involved!

Mr Bailey

Lateral Flow Testing

Lateral Flow testing has been taking place at school. This finishes on Monday 6th September. Pupils are then asked to complete two lateral flow tests at home weekly. There is no need to advise school of the result unless it is positive, and your child will be absent from school.

Tests can be ordered using the following link:

<https://www.gov.uk/order-coronavirus-rapid-lateral-flow-tests>

Public Health England guidelines state:

Individuals are not required to self-isolate if they live in the same household as someone with COVID-19, or are a close contact of someone with COVID-19, and any of the following apply:

- they are fully vaccinated
- they are below the age of 18 years and 6 months
- they have taken part in or are currently part of an approved COVID-19 vaccine trial
- they are not able to get vaccinated for medical reasons

Instead, they will be contacted by NHS Test and Trace, informed they have been in close contact with a positive case and advised to take a [PCR test](#). We would encourage all individuals to take a PCR test if advised to do so.



You are warmly invited to attend the following:

Open Evening

Thursday 16th September 2021 6pm-9pm

Headteacher's Address: 6.15pm, 7.15pm & 8.15pm



FIND Newsletter Autumn 2021

The Autumn 2021 issue of the FIND newsletter is available now via the link below and also on the SEND area of the school website.

Inside you can read about the Lancashire Educational Psychology Service, get information on parent/carer support groups, amongst many other informative articles.

FIND

The SEND Newsletter for Lancashire families

Welcome to the Autumn issue of the FIND Newsletter, 2021.

I was lucky enough to have the opportunity to visit some of the Lancashire Break Time groups this summer. I met children and young people taking part in some really challenging activities for the first time, and saw their confidence increase as they learned new skills. The staff were brilliant, providing support when needed, whilst encouraging independence and teamwork within the groups. In order to access these group activities from next spring, parents and carers will be invited to register for the new Break Time service later in the year – find out more on page 9.

We have stories in this issue on the achievements of young people from across Lancashire. Tegan has been fundraising for a local charity, despite recently undergoing surgery. Arnold has joined an accessible cheerleading group, and Tom has completed an apprenticeship and successfully applied and interviewed for a new role. Well done to you all!

As children and young people return to school this September, many parents will heave a sigh of relief. For some, though, this is a difficult time as their child struggles with anxiety around attending school. The Educational Psychology Service have been working on strategies to support families that experience these difficulties – read more on page 5.

Finally, please continue to send us your stories, pictures, letters and more. Articles for the next issue can be emailed to FIND@lancashire.gov.uk by Friday 26th September.

Thank you all for your continued support
Sarah Deady
Policy, Information and Commissioning (Start Well)

www.facebook.com/LancashireLocalOffer



"Tell me and I forget.
Teach me and I remember.
Involve me and I learn."
Benjamin Franklin

www.lancashire.gov.uk/SEND



INSIDE

2. Kidz to Adultz North
3. Local Teenager gets moving for charity
4. POWAR
5. Lancashire Educational Psychology Service: Emotionally-Based School Avoidance
7. One Kind Word – Anti-Bullying Week
9. Lancashire Break Time
11. Apply for a school place: children with SEN
12. Rainbow Hub Nursery
13. Unique Toyz
14. Bonfire Night Tips
15. Arnold – Shooting Stars
18. Dance Syndrome
21. Carousel Music & Movement
23. DFN Project Search
25. Parent Carer Support Groups
26. The Incredible Years ADHD Parent Empowerment Course
27. Lancashire County Council contact details

Lancashire
County Council



INSIDE

2. Kidz to Adultz North
3. Local Teenager gets moving for charity
4. POWAR
5. Lancashire Educational Psychology Service: Emotionally-Based School Avoidance
7. One Kind Word – Anti-Bullying Week
9. Lancashire Break Time
11. Apply for a school place: children with SEN
12. Rainbow Hub Nursery
13. Unique Toyz
14. Bonfire Night Tips
15. Arnold – Shooting Stars
18. Dance Syndrome
21. Carousel Music & Movement
23. DFN Project Search
25. Parent Carer Support Groups
26. The Incredible Years ADHD Parent Empowerment Course
27. Lancashire County Council contact details

<http://www.broughtonhigh.co.uk/schooldata/pages/news/newsletters/FIND%20Newsletter%20Autumn%202021.pdf>

WORD OF THE WEEK

mendacious: adjective

telling lies, especially habitually

Example

Instead of giving me another **mendacious** story, just be honest for once.

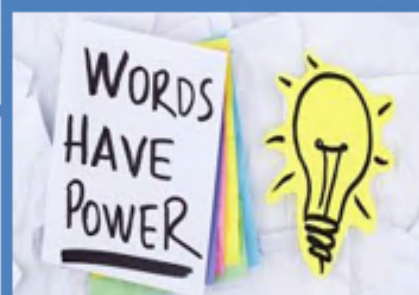
Synonyms

dishonest, lying, untruthful.

Antonym

honest.

SCHOOL SYNERGY



National
Careers
Service

Speech and Language Therapist

National
Careers
Service



£22,000 to £41,000



38-40 hours per week (8am-6pm)



5 GCSEs including Maths and English at grade 4 and above for A-level. Then 2-3 A-Levels for a degree in speech and language therapy that's approved by the Health and Care Professions Council. Science, languages, English Language and social sciences such as Psychology at A-level can help at degree level.

0800 100 900 nationalcareersservice.direct.gov.uk



Do you love to sing regardless of ability? Then try...



Singspiration Community Choir

**TWO FREE TASTER
SESSIONS TO TRY
US OUT**

MONDAY – Broughton Primary School

Garstang Road, Broughton PR3 5JB – 7.30pm to 9pm commencing 13th September 2021

TUESDAY – Longridge C.E. Primary School

Berry Lane, Longridge PR3 3JA – 7.30pm to 9pm commencing 14th September 2021

WEDNESDAY – Garstang High School

Garstang Road, Bowgreave, Garstang PR3 1YE – 7.30pm to 9pm commencing 15th September 2021

THURSDAY – Kirkham St Michael's C.E. Primary School

School Lane, Kirkham, PR4 2SL – 7.30pm to 9pm commencing 16th September 2021

Have fun singing as part of a group and build your confidence as a singer

Make new friends and boost your wellbeing

Enjoy contemporary and upbeat fun songs

No experience necessary and no need to be able to read music!

36 weekly sessions – school term time only

No Auditions! – *Everyone is welcome to come and have a go!!*

www.singspirationcommunitychoir.co.uk

Call: **Stewart on 07740 593979**

Email: **stewart@singspirationcommunitychoir.co.uk**

*Private music lessons for Piano, Vocal, Keyboard and Brass also available
contact Stewart for details*



P.T.F.A

Annual General Meeting

Wednesday 22nd September 2021

at 6.00pm

in the Oak Meeting Room, Visitor Reception

AGENDA

1. Welcome
2. Apologies
3. Election of Chair/Vice-Chair/Secretary/Treasurer
4. New for 2021-22
5. COVID-19
6. Open Evening and Awards Evening
7. Financial Report
8. PTFA Programme 2021-22
9. School/Parental Issues

FORM TUTORS 2021-22

Head of Year 7: Mr S Hughes		hughess@broughtonhigh.co.uk
B	Mr T Nayler	naylert@broughtonhigh.co.uk
C	Mrs P Donleavy (Mon, Tue, Thu) and Mrs J Hough (Wed, Fri)	donleavyp@broughtonhigh.co.uk houghj@broughtonhigh.co.uk
H	Mrs V Rukin (Mon, Thu, Fri) and Miss E O'Rourke (Tue, Wed)	rukinv@broughtonhigh.co.uk orourkee@broughtonhigh.co.uk
N	Ms R Hulme (Mon, Wed, Thu) and Mrs H Hardman (Tue, Fri)	hulmer@broughtonhigh.co.uk hardmanh@broughtonhigh.co.uk
R	Miss C Duckworth	duckworthc@broughtonhigh.co.uk
S	Mr N Yasin	yasinn@broughtonhigh.co.uk

Head of Year 8: Mrs L Bishop		bishopl@broughtonhigh.co.uk
B	Mr A Starkie	starkiea@broughtonhigh.co.uk
C	Ms D Smith (Mon, Wed, Thu) and Mrs R Fahey (Tue, Fri)	smithd@broughtonhigh.co.uk fahey@broughtonhigh.co.uk
H	Mrs C Tillotson	tillotsonc@broughtonhigh.co.uk
N	Mrs K Lupton	luptonk@broughtonhigh.co.uk
R	Miss M Harrison	harrisonm@broughtonhigh.co.uk
S	Mrs B Burke (Wed, Thu, Fri) and Miss H Johnson (Mon, Tue)	burkeb@broughtonhigh.co.uk johnsonh@broughtonhigh.co.uk

Head of Year 9: Mr S Lynn		lynns@broughtonhigh.co.uk
B	Mrs R Wortley	wortleyr@broughtonhigh.co.uk
C	Mr W Gaffney	gaffneyw@broughtonhigh.co.uk
H	Mr M Tomlin	tomlinm@broughtonhigh.co.uk
N	Mr R Marquis	marquisr@broughtonhigh.co.uk
R	Mr S Shepherd	shepherds@broughtonhigh.co.uk
S	Mrs K Meakin (Mon, Tue, Thu, Fri) and Mrs T Briault (Wed)	meakink@broughtonhigh.co.uk briaultt@broughtonhigh.co.uk

Head of Year 10: Mrs A Boardman		boardmana@broughtonhigh.co.uk
B	Mr M Lowe	lowem@broughtonhigh.co.uk
C	Miss C Ives	ivesc@broughtonhigh.co.uk
H	Miss K Klunder	klunderk@broughtonhigh.co.uk
N	Miss L Maloney	maloneyl@broughtonhigh.co.uk
R	Mr J Peterson	petersonj@broughtonhigh.co.uk
S	Mrs E Wright	wrighte@broughtonhigh.co.uk

Head of Year 11: Mrs J Higham		highamj@broughtonhigh.co.uk
B	Miss R Taylor	taylorr@broughtonhigh.co.uk
C	Mr C Lord	lordc@broughtonhigh.co.uk
H	Dr J Wright	wrightj@broughtonhigh.co.uk
N	Miss V Backhouse	backhousev@broughtonhigh.co.uk
R	Mrs K McKibbin	mckibbink@broughtonhigh.co.uk
S	Mrs V Newton (Mon, Tue, Wed, Thu) and Miss L Hughes (Fri)	newtonv@broughtonhigh.co.uk hughesl@broughtonhigh.co.uk

HOLIDAY PATTERN 2021-22

Wednesday 1 st September 2021	INSET DAY (1)
Thursday 2 nd September 2021	School opens (<i>Year 7 and Year 11 only</i>)
Friday 3 rd September 2021	School opens (<i>all Years</i>)
Thursday 16 th September 2021	Open Evening (<i>school closes 1.00pm</i>)
Friday 17 th September 2021	INSET DAY (2)
Friday 22 nd October 2021	School closes
HALF TERM HOLIDAYS	
Monday 1 st November 2021	School opens
Friday 12 th November 2021	Bank Holiday in lieu of Queen's Jubilee
Friday 17 th December 2021	School closes at 1.00pm
CHRISTMAS HOLIDAYS	
Tuesday 4 th January 2022	School opens
Friday 11 th February 2022	School closes
HALF TERM HOLIDAYS	
Monday 21 st February 2022	School opens
Friday 1 st April 2022	School closes
EASTER HOLIDAYS	
Tuesday 19 th April 2022	School opens
Monday 2 nd May 2022	May Bank Holiday
Friday 27 th May 2022	School closes
HALF TERM HOLIDAYS	
Monday 6 th June 2022	School opens
Tuesday 19 th July 2022	School closes at 1.00pm
Wednesday 20 th July 2022	INSET DAY (3)
Thursday 21 st July 2022	INSET DAY (4)
Friday 22 nd July 2022	INSET DAY (5)



HOLIDAY PATTERN 2022-23

Thursday 1 st September 2022	INSET DAY (1)
Friday 2 nd September 2022	School opens (<i>Year 7 and Year 11 only</i>)
Monday 5 th September 2022	School opens (<i>all Years</i>)
Thursday 22 nd September 2022	Open Evening (<i>school closes 1.00pm</i>)
Friday 23 rd September 2022	INSET DAY (2)
Friday 21 st October 2022	School closes
HALF TERM HOLIDAYS	
Monday 31 st October 2022	School opens
Friday 18 th November 2022	INSET DAY (3)
Friday 16 th December 2022	School closes at 1.00pm
CHRISTMAS HOLIDAYS	
Tuesday 3 rd January 2023	School opens
Friday 10 th February 2023	School closes
HALF TERM HOLIDAYS	
Monday 20 th February 2023	School opens
Friday 31 st March 2023	School closes
EASTER HOLIDAYS	
Monday 17 th April 2023	School opens
Monday 1 st May 2023	May Bank Holiday
Friday 26 th May 2023	School closes
HALF TERM HOLIDAYS	
Monday 5 th June 2023	School opens
Wednesday 19 th July 2023	School closes at 1.00pm
Thursday 20 th July 2023	INSET DAY (4)
Friday 21 st July 2023	INSET DAY (5)

Stage 1

Reason:

- Teacher has to pause the lesson to you to remind you to focus and improve your behaviour.
- Examples may include shouting out, lack of focus, work avoidance, distracting others, entering or exiting inappropriately, talking when the teacher is talking and poor manners.

Sanction:

- Reminder and explanation of reason.

Stage 2

Reason:

If you disagree with the stage 1 or have continued to disrupt the learning of others and have lost focus.

Sanction:

- Verbal warning, explanation of reason.
- Recorded on Synergy as 'warning given'.
- During or when exiting the lesson, your teacher will speak to you about your conduct in order to avoid a re-occurrence in future lessons.

Stage 3

Reason:

- Persistently losing focus in class or disrupting others, being disrespectful to the teacher or a peer or mis-use of school equipment.

Sanction:

- Final verbal warning.
- A change of seat in the classroom if possible and/or a change of task if necessary.
- Recorded on Synergy.
- Lunch detention for the next day (centralised HOY detention) issued by subject teacher.

What if

- Refusal to move seats = Immediate call for SLT, exclusion for remainder of lesson and a/school detention.
- Poor conduct in lunch detention = A/school detention
- Missed lunch detention = A/school detention
- X2 Stage 3 referrals in a day = Remainder of the day in exclusion & a/school detention.

Stage 4

Reason:

- Persistently displayed elements of low-level disruption through the stages **OR** will have behaved in a serious single inappropriate way/failed to comply.

Sanction:

- Removed from class by SLT and will remain in the Exclusion room for the remainder of that lesson.
- An afterschool detention in the exclusion room the following day.
- Recorded on Synergy.

What if:

- Missed A/school = Following day in isolation & remain for A/school detention.
- If you continue to cause a disturbance or argue = 'Failed referral' : Remainder and next full day in exclusion. Parent meeting and A/school detention.
- x2 stage 4 referrals in a day= Remainder of the day in isolation and the following day, with an A/school detention.

Breakdown of sanctions



Location/Issue	Examples	Sanction
School rules	Mobile phone, uniform, late to school, persistent lack of equipment, chewing gum, fizzy drinks and big bags of sweets. (items not permitted will be confiscated)	<ul style="list-style-type: none"> • Break detention • Afterschool detention if persistent • (Any uniform issue that can't be resolved will result in a break detention and 24 hrs to rectify it)
In class behaviour (Stages 1-4)	Losing focus, distracting others, lack of effort, shouting out, entering & exiting in an inappropriate manner, rudeness to staff/peer.	<ul style="list-style-type: none"> • Warning recorded (Stage 2) • Lunch detention (Stage 3) • Exclusion Room & A/school detention (Stage 4)
Missing homework/below standard	Missing homework/below standard	<ul style="list-style-type: none"> • X1 Warning • X2 Lunch detention (ST) • X3 A/School detention (ST) • X4 A/School detention (HOD)
Punctuality	Late to school- not in line by 8:40 X2 lates in a week X3 lates to lesson per week	<ul style="list-style-type: none"> • Break detention • Friday a/school detention • Friday a/school detention
Out of class behaviour	Negative behaviour at break or lunch, dropping litter, poor behaviour on the bus.	<ul style="list-style-type: none"> • Lunch detention
Serious behaviour incident	Stage 4 referral, failure to comply, truanting, fighting, smoking, bullying, harassment of another pupil, selling in school, theft, online mis-use, derogatory language, swearing at a teacher, x2 stage 4 referrals in a day, missed afterschool detention.	<ul style="list-style-type: none"> • Exclusion room (remainder of lesson/potential for full next day) • (Further steps may be taken)

Sanction	Time	Location	Staff lead
Break detention	10 mins	BC1	Pastoral Manager/AHT
Lunch detention	20 mins	BC1	HOY
A/school detention	1 hour	Exclusion room	Exclusion manager